



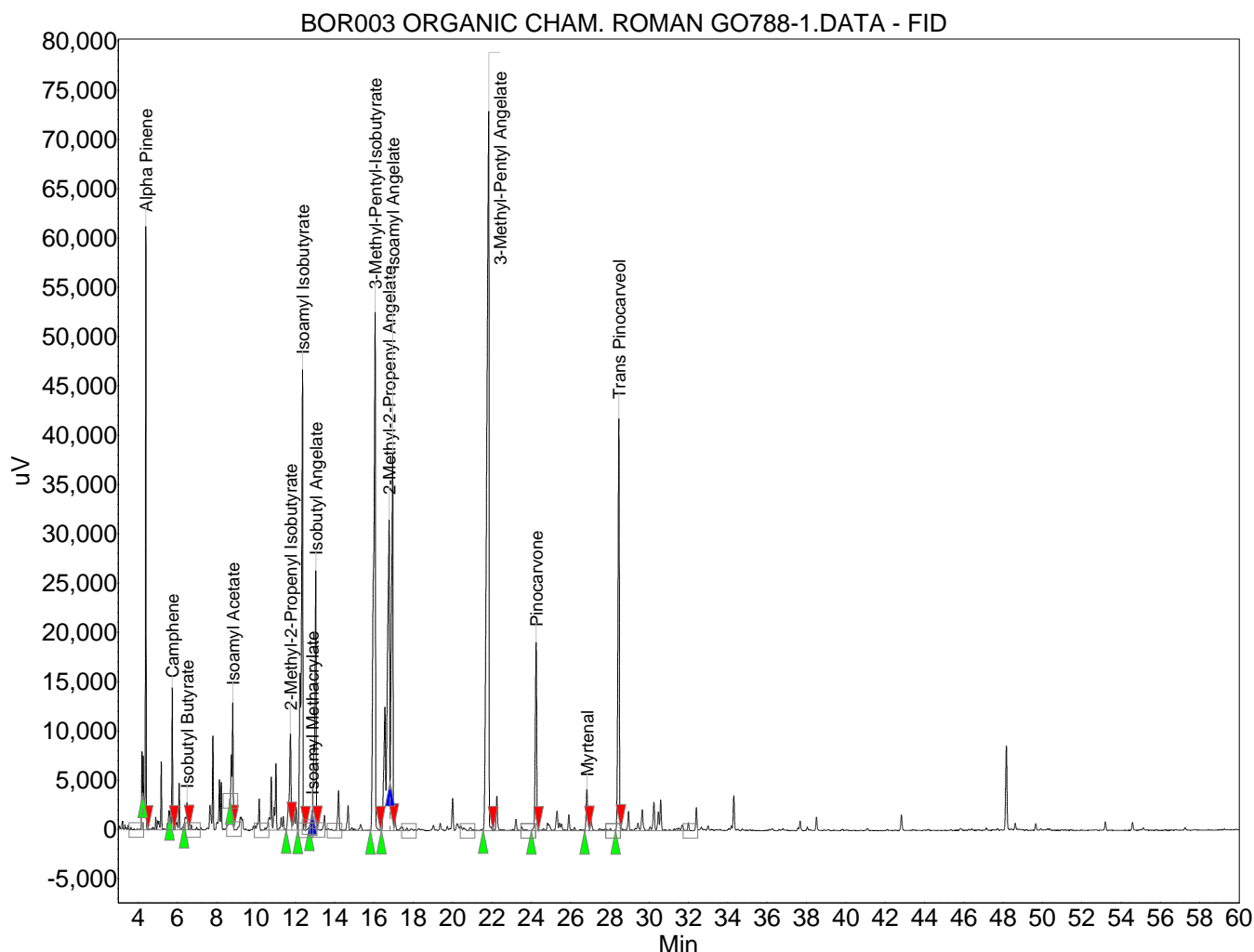
Absolute Aromas Ltd.
Alton, Hampshire, UK.
GU34 2QL

lab@absolute-aromas.com
www.absolute-aromas.com

Analysis : BOR003 ORGANIC CHAM. ROMAN GO788-1

Instrument : Varian 430-GC
Method : Cham Roman
User : Chris Payne

Acquired : 17/06/2013 12:24:51
Processed : 19/06/2013 11:43:53
Printed : 19/06/2013 11:46:14



Peak results :

Index	Name	Time [Min]	Area [uV.Min]	Height [uV]	Area % [%]
1	Alpha Pinene	4.40	2550.5	61250.0	6.174
2	Camphene	5.75	708.9	14425.2	1.716
3	Isobutyl Butyrate	6.49	276.1	2764.6	0.668
4	Isoamyl Acetate	8.82	861.4	12008.3	2.085
5	2-Methyl-2-Propenyl Isobutyrate	11.75	998.2	9772.0	2.416
6	Isoamyl Isobutyrate	12.37	4556.7	46739.5	11.030
7	Isoamyl Methacrylate	12.85	121.7	1767.1	0.295
8	Isobutyl Angelate	13.04	2275.4	26233.0	5.508
9	3-Methyl-Pentyl-Isobutyrate	16.06	5733.1	52612.0	13.877
10	2-Methyl-2-Propenyl Angelate	16.77	5000.3	31520.4	12.103
11	Isoamyl Angelate	16.95	3650.5	38258.8	8.836
12	3-Methyl-Pentyl Angelate	21.84	9301.3	73002.0	22.514
13	Pinocarvone	24.25	1566.3	19118.8	3.791
14	Myrtenal	26.83	364.2	4187.2	0.882
15	Trans Pinocarveol	28.46	3348.0	41819.2	8.104
Total			41312.8	435478.3	100.000